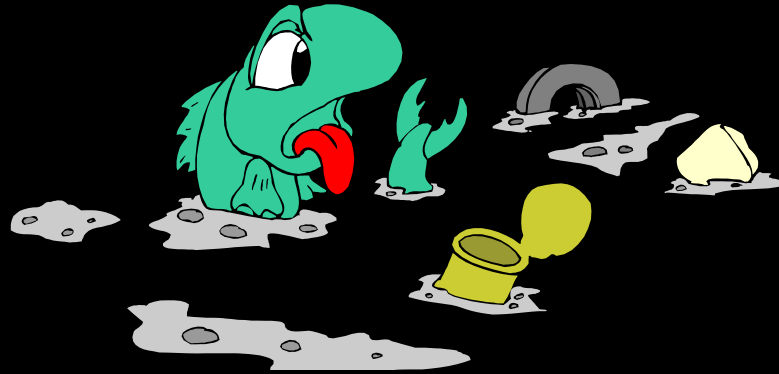


REPORT A SANITARY SEWER OVERFLOW



A sanitary sewer overflow is any overflow, spill, release, discharge or diversion of untreated or partially treated wastewater from the sanitary sewer system. This includes wastewater backups into buildings. Sanitary sewer overflows are a serious situation that must be reported immediately to city personnel.

Please contact the Wastewater Division to report sanitary sewer overflows.

Reporting during normal business hours:

(805) 736-5083

Monday - Friday 7:00 am - 3:30 pm

Reported after hours:

City Dispatch

(805) 875-8115