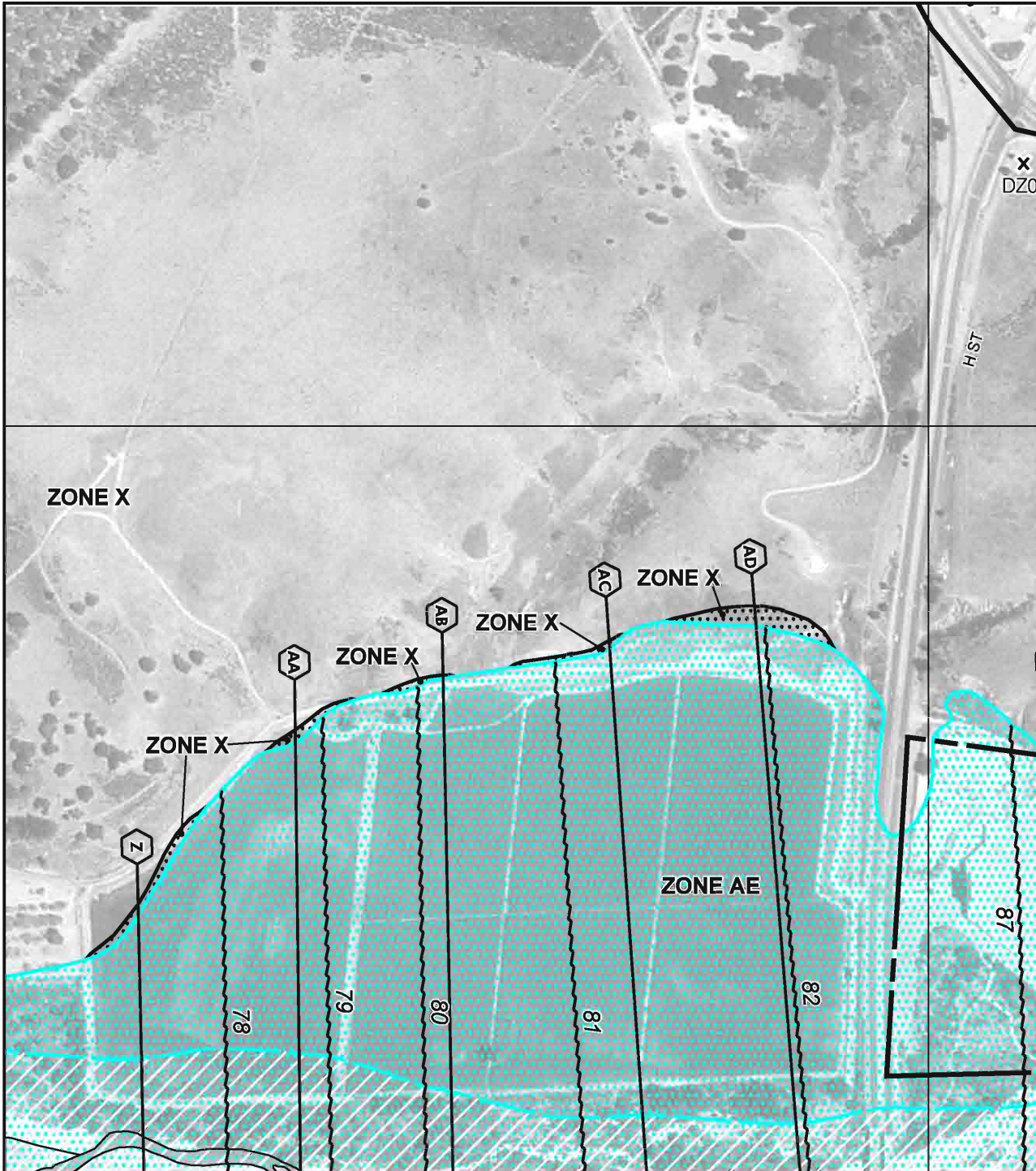
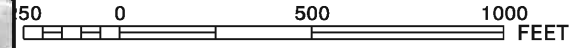




MAP SCALE 1" = 500'



X
DZ01

H ST

PANEL 0737F

FIRM
FLOOD INSURANCE RATE MAP
SANTA BARBARA COUNTY,
CALIFORNIA
AND INCORPORATED AREAS

PANEL 737 OF 1835

(SEE MAP INDEX FOR FIRM PANEL LAYOUT)

CONTAINS:

COMMUNITY	NUMBER	PANEL	SUFFIX
LOMPOC, CITY OF	060334	0737	F
SANTA BARBARA COUNTY	060331	0737	F

Notice to User: The **Map Number** shown below should be used when placing map orders; the **Community Number** shown above should be used on insurance applications for the subject community.

MAP NUMBER
06083C0737F

EFFECTIVE DATE
SEPTEMBER 30, 2005



Federal Emergency Management Agency

NATIONAL FLOOD INSURANCE PROGRAM

This is an official copy of a portion of the above referenced flood map. It was extracted using F-MIT On-Line. This map does not reflect changes or amendments which may have been made subsequent to the date on the title block. For the latest product information about National Flood Insurance Program flood maps check the FEMA Flood Map Store at www.msc.fema.gov