



Used Tire Round-up Days let you recycle and save money!

The City of Lompoc provides special Used Tire Round-Up days for residents of the city and the unincorporated areas of Mesa Oaks, Mission Hills and Vandenberg Village.

On a Used Tire Round-Up Day, held three times per year during the week of City Wide Clean-Up, residents can recycle their tires at **no charge**. Recycle your waste tires in one of the following ways:

Pick-up

Arrange to have your tires picked-up from your curb or alley by calling 875-8024 in advance to schedule an appointment. Residents do not need to be home for collection.


For information on the next Used Tire Round-Up Day, please call 875-8024

Drop-off

You can also drop-off your tires on a Used Tire Round-Up Day at **no charge**. Drop them off at the Lompoc Landfill, or at a collection container conveniently located for residents of the unincorporated areas.

State law prohibits transporting more than nine tires at once. If you have more than that, please make multiple trips.

This special program is for residents only; tire dealers, auto repair shops or tire stores are not eligible.




For information on the next Used Tire Round-Up Day, please call 875-8024

For more information about waste tires, please contact:
 City of Lompoc
 Public Works Department
 Solid Waste Division
875-8024 or 875-8027
www.ci.lompoc.ca.us

California Integrated Waste Management Board
 Waste Tire Program
916-255-2577 or 1-800-CLEAN UP
www.ciwmb.ca.gov/tires

Funded by a grant from the
 California Integrated Waste Management Board
 Printed on Recycled Paper



Dispose of your old tires the right way - we'll help you.

City of Lompoc Used Tire Collection Program

Waste Tire Recycling and Disposal information for residents of the City of Lompoc and Unincorporated Areas

For information on the next Used Tire Round-Up Day, please call 875-8024

For information on the next Used Tire Round-Up Day, please call 875-8024

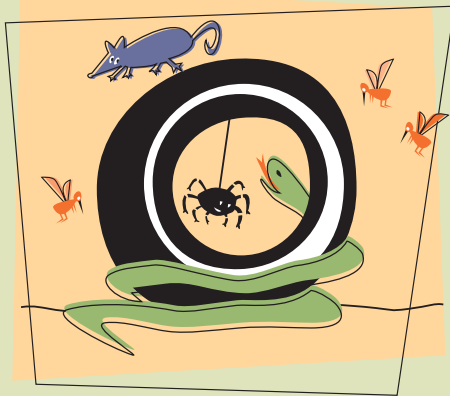
The Problem

Californians discard an estimated 30 million tires each year. While a number of consumers leave old tires at the tire dealership when getting new tires, many tires are taken home and piled in some forgotten corner.

Blown out tires are often discarded at the side of the road where they have been changed. And, piles of used tires are often dumped along rural roads.

Environmental & Health Hazards

The discarded or forgotten piles of old tires can create a number of environmental and health hazards. Discarded tires are an open invitation for unwanted vectors, such as rodents, snakes, and black widow spiders. An old tire filled with stagnant water can also provide a breeding area for mosquitoes.



If a tire pile catches fire, it can take weeks or even months to put the fire out. The smoke fumes are hazardous for those with respiratory ailments and for the very young and the very old. The smoke is also an irritant to eyes and to those with allergies and sinus problems.

Don't take that tire home...

The next time your vehicle is in for new tires, leave the old tires with the dealership. Yes, there will be a small charge for recycling the old tires. Disposal fees at a tire dealership range from \$0.50 to \$2.00 per passenger tire. If you try to get rid of your tires at a later date, the average disposal cost is \$1.25 per passenger tire.

The City of Lompoc Landfill allows all residents of the Lompoc Valley to bring up to five tires to the landfill for free. More than five tires will be charged at the commercial rate of:

Auto & Light Truck (up to 30" diameter) \$2.70 ea.

Medium Truck (30"-40" diameter) \$6.40 ea.

Equipment Tires (over 40"-60" diameter) \$75.00 ea.

Earthmover Tires (over 60" diameter) \$100.00 ea.

To confirm the current disposal costs please call the City of Lompoc's Solid Waste Division at (805) 875-8024.

California State Law states:

A person can legally transport up to nine waste tires to a disposal site. Hauling ten or more tires requires the hauler to be a registered waste tire hauler with the California Integrated Waste Management Board. Please make multiple trips if you have more than nine tires to recycle.

The California Highway Patrol can issue a ticket for transporting more than nine waste tires. The violation can cost \$1,000.00.

Where do those waste tires go?

California recycles 20 million tires annually through such uses as: rubberized asphalt concrete or roads; molded rubber products, such as playground safety mats; and combustion to generate electricity and manufacture cement.



One common household item, the black woven doormat, has been made from waste tires for many years. You can go to www.recyclestore.com to find companies that make consumer products from waste tires, such as: doormats, tree tires, elaborate swings, decorative planters and much more.

Waste tires from the City of Lompoc are transported to a landfill capable of using tires as landfill cover.