

How To Dispose of Bulky Items

Bulky items such as couches, mattresses, and large appliances can be difficult to dispose of if you don't have the means to haul them to the Lompoc Landfill. Fortunately, the City offers the following programs to assist its refuse customers.

Bulky Item Pickups

Residential customers can arrange to have one bulky item picked up by the City each year, at no additional charge. To schedule a Bulky Item Pickup, simply call the City the week before you'd like to have it removed. (A mattress and box springs, or a sofa and loveseat set will count as one item.)

Special Hauls

This program is available to residents and businesses for a fee, and can be used to have multiple bulky items hauled away by the City. To schedule a Special Haul, call the week before you'd like your items removed. This program is offered year-round, on a weekly basis.



Citywide Cleanup

Offered each year in June, residents can call for an appointment to have up to five bulky items picked-up at no charge. Please look for details in the May 2012 Trash Talk.

Self Haul to the Lompoc Landfill

If you do have access to a vehicle capable of hauling bulky items (e.g., van or a pickup truck), hauling your materials to the Lompoc Landfill is always an option. The Landfill is open daily (Monday - Friday from 7:30 a.m. to 4:00 p.m., and Saturday and Sunday from 10:00 a.m. to 3:45 p.m.) and is located at the south terminus of Avalon Rd. Fees do apply, and are based on the types of materials and the size of the load, but are generally less than scheduling a Special Haul with the City.

For more information, or to schedule a Bulky Item Pickup, or Special Haul, please call the Solid Waste Division office at (805) 875-8024.

Programs of the Solid Waste Division:

Commingled & Green Waste Recycling • Electronics Recycling • Refuse Collection • Lompoc Landfill City Recycling Center • Waste Tire Recycling • Backyard Composting • Household Hazardous Waste Collection Used Oil & Filter Drop-Off Sites • Street Sweeping • Citywide Cleanup • Bulky Item Pickups & Special Hauls

Tire Recycling Day

February 8th, 2012

Did you know Californians discard an estimated 40 million waste tires each year? In an effort to promote waste tire recycling, and reduce the amount of illegal dumping, the City is conducting a Waste Tire Roundup Day. On Waste Tire Roundup Day, City of Lompoc residents can have their old tires picked up from their curb or alley **free of charge**. Call (805)875-8024 to make an appointment, and place your tires out for collection by 7:00 a.m., Wednesday, February 8th.



Waste tires picked up from Lompoc residents on Tire Roundup Day.

Residents of the Mission Hills, Mesa Oaks and Vandenberg Village may also drop-off their tires on this day, free of charge, to *Drive-In Recycling* (2126-1/2 No. H St.) or the Lompoc Landfill. Only nine tires can be legally transported at one time.

This program is for residents only. Tire dealers, auto repair shops and other businesses are not eligible.

Start Composting!

Convert your vegetable food wastes and yard clippings into a high quality soil amendment for your lawn, garden or landscaping! Composting not only provides needed nutrients (phosphorous, potassium, nitrogen, and trace minerals) to your soil, but also helps divert organic wastes from disposal at the Lompoc Landfill. In fact, your home waste stream can be reduced by as much as 35% by composting food scraps and yard wastes.

Backyard composting is relatively easy, fun and inexpensive. To help residents get started, the **City of Lompoc offers backyard composting bins at the reduced price of \$22**. The kit includes an easy to assemble, durable plastic bin, and an informative guide book.



The Evolution of the Waste Can



Graffiti Busting in Lompoc

Although the Lompoc Police Department has spearheaded the City's graffiti abatement program for years, it relied on the availability of volunteers which couldn't always provide the stability the program needed. Therefore, in an effort to bolster and expedite the clean-up of graffiti around town, the City recently hired a Graffiti Abatement Officer (GAO).

The program is primarily paid for with state redevelopment funds, and is implemented by the Solid Waste Division in conjunction with the Police Department. With up to 20 incidents of graffiti found each week, the beefed-up program is a real benefit to the community.

The new GAO tackles graffiti on walls, fences and on other objects in the public right-of-way. However, property owners and managers may receive a notice to remove the graffiti when it is found on private property.

Lompoc citizens can also help by reporting incidents of graffiti. To make a report, please call the Solid Waste Code Enforcement Officer at (805) 875-8033.



Important Resources

Solid Waste Office (805) 875-8024
Lompoc Landfill (805) 736-9042
Code Enforcement (805) 875-8033

Websites:
City of Lompoc www.cityoflompoc.com
SB County Recycling www.lessismore.org
CA Integrated Waste www.ciwbm.ca.gov

PRSR STD
U.S. POSTAGE
PAID
LOMPOC, CA
PERMIT NO. 72

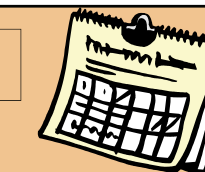


Trash Talk

A Publication of the City of Lompoc, Solid Waste Division, Fall 2011 Volume 18 Issue 2

Postal Patron, Local Lompoc, California

Mark Your Calendar!



Upcoming Events

Jan. 2nd.....Christmas Tree Recycling Week, (p. 2)

Feb. 8th.....Tire Round-Up Day (p. 5)

Holiday Collection and Landfill Schedule

If your collection day falls on, or follows, a holiday, your service will be delayed by one day that week.

Friday, December 23, Christmas Eve (Observed)
Regular collection schedule
City administrative offices will be closed
Landfill holiday hours (10:00 a.m. - 3:45 p.m.)

Sunday, December 25, Christmas Day
Landfill closed

Monday, December 26, Christmas (Observed)
Regular collection schedule
City administrative offices will be closed
Landfill holiday hours (10:00 a.m. - 3:45 p.m.)

Sunday, January 1, New Years Day
Landfill closed

Monday, January 2, New Years Day (Observed)
Regular collection schedule
City administrative offices will be closed
Landfill holiday hours (10:00 a.m. - 3:45 p.m.)

Monday, January 16, Martin Luther King Jr. Day
No collection
Collection delayed by one day all week
Landfill closed

Monday, February 20, Presidents Day
No collection
Collection delayed by one day all week
Landfill closed

In This Issue:

Mandatory Commercial Recycling Laws to Affect Many Businesses, **Page 1**

Christmas Tree Recycling Week, **Page 2**

Recycling's Frequently Asked Questions, **Page 2**

The "A" to "Z" of Lompoc's Recycling and Disposal Opportunities, **Page 3, 4**

How to Dispose of Bulky Items, **Page 5**

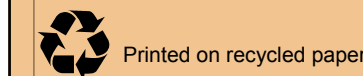
Waste Tire Roundup Day, **Page 5**

Start Composting!, **Page 5**

Graffiti Busting in Lompoc, **Page 6**

Important Resources, **Page 6**

Mark Your Calendar (Upcoming Events and Holiday Schedule), **Page 6**



Mandatory Commercial Recycling Laws to Affect Many Businesses

Beginning July 1, 2012, State Law AB32 (The Global Warming Solutions Act), and newly enacted AB 341 (Solid Waste: Diversion) will require a significant number of businesses to implement a recycling program. Because the solid waste industry has been identified as a significant source of green house gas (GHG) emissions, the primary purpose of these laws is to reduce the amount of GHG emissions by diverting more commercial waste to recycling efforts. Increasing recycling rates can reduce the volume of goods made from raw materials at fossil fuel burning plants, and reduce the amount of methane released from landfills from decomposing organic materials. In addition, increasing recycling rates has the added benefit of preserving landfill space.

Why Does the Recycling Mandate Target the Commercial Sector?

Approximately 75% of landfilled wastes in California are from commercial sources, and half of those materials disposed are readily recyclable. This suggests that commercial sector recycling rates are lagging behind those of single-family residents.

Will My Business, Apartment Building or Public Agency Be Affected?

Under the legislation, "businesses" that may be subject to the recycling mandate are defined to include: commercial entities, multi-family dwellings, public agencies, industrial facilities, non-profit organizations, school districts/schools and universities/colleges. If your "business" meets the specific criteria below, implementing a recycling program will be required.

- Commercial Entities/Public Agencies/Non-Profits, etc., that generate 4 cubic yards (approximately 800 gallons) or more of refuse per week.
- Multi-Family Dwellings with 5 or more units (regardless of amount of refuse per week).

In early 2012, City Solid Waste staff will contact those "businesses" that will be affected by the new recycling laws. Staff will also be available to provide assistance in setting up recycling services.

Recycling Services Offered by the City

The City's Solid Waste Division offers its customers several types of recycling options, all of which are offered at no additional charge. The following recycling services are available:

Commingled Recycling



Cardboard Recycling



Green Waste Recycling



Where Can I Find More Information on the New Recycling Requirements?

Although the regulations have not yet been finalized, for additional background information, you can visit the following link: <http://www.calrecycle.ca.gov/climate/Recycling/default.htm>

Christmas Tree Recycling Week

January 2nd - 6th, 2012

Wondering what to do with your Christmas tree once the holiday season has come to an end? Christmas Tree Recycling Week is your answer!

Place your tree out for collection by **7:00 a.m., Monday, January 2nd**, next to your refuse container, and it will be picked up during this week at no charge. Prior to recycling, all decorations and plastic or metal tree stands must be removed. The City of Lompoc has contracted with West Coast Arborists to collect and grind the trees into mulch. The mulch will then be used as landscape material throughout the City.

If you don't place your tree out on time and miss the pickup, you can still drop-off your tree (remove stand and decorations) at the Lompoc Landfill free of charge.



Recycling's Frequently Asked Questions

Although recycling has never been more convenient, it can still be challenging to know exactly what can, and cannot, be placed in your blue-lidded recycling container. One of the reasons for this, is that the list of approved materials often expands over time. In other cases, customers have questions on how to prepare materials before placing them in their container. Please see below for answers to the most frequently asked questions.

Can I recycle plastic bags? If so, what kinds of bags, and where can I recycle them?

Absolutely! The following types of plastic bags are recyclable through your curbside recycling cart and at most supermarkets and drug stores (e.g., CVS, Walgreens): grocery and shopping bags, produce bags, newspaper bags, bread bags, dry cleaning bags, and ziplock baggies. Even better than recycling them? Reduce the amount you generate by utilizing reusable tote bags whenever you go to the grocery store.



Plastic bags must be clean, dry and free of residue before recycling. Also, please make sure to bundle bags together, and then tie the outer bag shut. This will prevent bags from being carried away by the wind during collection operations, as well as streamline sorting operations at the Material Recovery Facility (MRF).

Do I need to remove the lids and caps from jars and bottles before recycling?

It's best to take the lid off if it's a different material than the container, such as a metal lid on a glass jar. Once removed, the metal lid can be recycled. If the caps, or tops, are of the same material as the container, it's fine to leave them on.



Do I need to rinse all my containers before I place them in my recycling bin?

A quick rinse is a good idea for those jars and cans that contain food residue - but they do not need to be sparkling clean. Beverage bottles and cans just need to be free of liquids. The main concern is making sure your recycled paper is free of food and liquids, which can prevent it from being properly recycled.



What are the most common items placed in customers' blue-lidded bins that aren't recyclable?

Recycling's worst offenders include the following items:

- Styrofoam
- Paper towels, tissue, toilet paper and soiled paper
- Wax coated paperboard (e.g., ice cream and milk cartons)
- Aerosol cans (if even slightly full)
- Window glass
- Light bulbs (of any kind)
- Electronics
- Pizza boxes soiled with grease and cheese
- Pottery and ceramics
- Hazardous wastes (e.g., paint, solvents, cleaners, etc.)

(Some of the above mentioned materials are recyclable, just not through your curbside collection bin. Please call (805) 875-8027 for information.)



THE "A" TO "Z" OF LOMPOC RECYCLING



MATERIAL TYPE	EXAMPLES OF MATERIALS	RECYCLING/DISPOSAL OPTIONS	RECYCLING/DISPOSAL TIPS	SOURCE REDUCTION/REUSE
Appliances	Washers, dryers, refrigerators, freezers, ovens/ranges, dishwashers, microwaves, etc.	Lompoc Landfill or "Bulky Item Pickup"	Do not place in trash or recycling container.	Donate working units to charity or thrift store.
Batteries	Triple-A, Double-A, C-cell, D-cell, Nickel-Cadmium, Lead Acid, Silver Oxide, Lithium, auto-batteries, etc.	Household Hazardous Waste Collection Facility or Lompoc Landfill	See list of facilities below for other household battery collection sites.	Use rechargeable batteries.
Cardboard	Corrugated Cardboard	Curbside Commingled Recycling Container, City Recycling Center, or Lompoc Landfill	Breakdown/flatten cardboard boxes.	Use for storage.
Construction & Demolition Materials	Top soil, asphalt, concrete, metal, wood	Lompoc Landfill	Sort materials by type to facilitate recycling.	Wood can be chipped/ground for mulch.
Electronic Waste "E-waste"	Computers, monitors, TVs, stereos, DVD players, video games, printers, fax machines, scanners, etc. (essentially anything with a cord or a battery)	Lompoc Landfill or the Household Hazardous Waste Collection Facility	Remove and recycle battery separately. (See below for battery collection sites.)	Donate working units to charity or thrift store.
Furniture	Couches, mattresses, tables, chairs, dressers, entertainment centers, etc.	Lompoc Landfill or "Bulky Item Pickup"	Call 875-8024 for "Bulky Item Pickup" information.	Donate to charity or thrift store.
Glass Containers	Glass jars, containers and bottles	Curbside Commingled Recycling Container, City Recycling Center, or "Drive-In Recycling" for CRV containers	Remove food, liquids and caps before recycling.	Use for storage of other materials.
Green Waste	Grass clippings, leaves, weeds and small branches	Curbside Green Waste Container or Lompoc Landfill	No plastic bags, garbage, animal waste, dirt, rocks, food wastes, garden hoses, flower pots, palm fronds, pampas grass, cactus, yucca and ice plants	Use "recycling mower" (leave clippings on lawn). Do not over-water or over-fertilize your lawn.
Hazardous Waste	Paint, stains/finishes, paint thinner, solvents, pesticides, fertilizers, cleaners, automotive fluids, fuels, electronic waste, batteries, fluorescent tubes/bulbs, aerosol cans, thermostats and thermometers containing mercury, asbestos, etc.	Household Hazardous Waste Collection Facility Antifreeze, auto batteries, used oil & filters, and electronic waste are also accepted at the Lompoc Landfill	Leave wastes in original container and never mix products together. Ensure containers have secure fitting lids and transport upright in a cardboard box.	Purchase small quantities; share leftovers with others; use water based paints; eliminate food sources or plant stressors before using pesticides.
Medical Waste (Drugs and Sharps)	Prescription and over-the-counter medications Sharps	Medications: Household Hazardous Waste Collection Facility (Does not accept Controlled Substances. Refer to box on right.) Sharps: S.B. County Health Clinic at 301 North R St.	Controlled Substances such as Vicodin, Codeine, etc., should be brought to the Drug Deposit box at the County Sheriff's Substation at 3500 Harris Grade Rd. Call (805) 737-7737 for collection hours.	Purchase quantities that will be used up before the medication expires.
Metal Containers	Tin, steel and aluminum cans, aluminum foil and trays, pots, pans and utensils	Curbside Commingled Recycling Container, City Recycling Center	Remove food, liquids and caps before recycling.	Use for storage of other materials.
Metal (Scrap)	Rain gutters, siding, plumbing, bicycles, lawn mowers, metal fixtures, hardware, building materials, etc.	Lompoc Landfill	Source separate from other materials. Drain fluids from engines before recycling.	Donate reusable building materials and fixtures.
Oil (Used Oil & Filters)	Used motor oil and filters	Used Oil & Filter Collection Centers (see below for locations)	Pick up a 14-quart drain pan and oil filter container (at no charge) at the Solid Waste Office (1300 W. Laurel)	Purchase re-refined oil when available.
Paper	Office paper, junk mail, newspaper, magazines, catalogs, greeting cards, phone books, paperboard (e.g., cereal boxes), etc.	Curbside Commingled Recycling Container, City Recycling Center	Place shredded paper in plastic bag; remove air and tie shut.	Print or copy on both sides; use as scratch paper.
Plastic Containers	Plastic bottles and containers (coded #1 through #7) such as soda and water bottles, milk jugs, detergent containers, and squeezable ketchup containers	Curbside Commingled Recycling Container, City Recycling Center	Remove food, liquids and caps before recycling. (Styrofoam not accepted)	Purchase in bulk when appropriate, and drink from a reusable water bottle.
Tires	Passenger, truck and tractor tires	Lompoc Landfill	Tires with wheels are OK.	Extend the life of your tires by keeping them at the proper inflation pressure.
Wood	Large tree branches, lumber, wooden furniture, etc.	Lompoc Landfill	Separate treated wood waste from non-treated wood waste.	Grind wood for mulch. Donate furniture and use branches as firewood.

Lompoc Recycling & Disposal Facilities

Lompoc Sanitary Landfill

South Terminus of Avalon Rd.

Mon - Fri: 7:30 a.m. - 4:00 p.m.
Sat and Sun: 10:00 a.m. - 3:45 p.m.

For more information, call (805) 875-8024.

City Recycling Center

1585 North V Street

Open daily

For more information, call (805) 875-8024.

Lompoc Household Hazardous Waste Collection Facility

1585 North V Street

Open by appointment only. Call 875-8024.

Used Oil Collection Centers

Locations below accept oil and filters
City of Lompoc Airport, 1801 North H St.
City Corporate Yard, 1300 W. Laurel Ave.
City Recycling Center, 1585 North V St.
Lompoc Landfill, S. Terminus of Avalon Rd.
Napa Auto Parts, 1100 North H St.
Perry's Auto Parts, 111 South F St.

State Certified Centers
These sites offer 40 cents/gallon:
Auto Zone*, 538 N. H Street
O'Reilly Auto*, 511 W. Central
*Does not accept oil filters

Battery Collection Sites

Residents can drop-off their household batteries at the following locations:
City Hall Lobby, 100 Civic Center Plaza
Solid Waste Office, 1300 W. Laurel Ave.
Lompoc Library, 501 E. North Ave.
Lompoc Fire, 115 So. G & 1100 No. D St.
(Automotive batteries not accepted)